

Vol. 52 No. 3
Fall 2020

HEATH VILLAGE VOICE

Inside

- | | | | |
|---|---|---|--|
| 2 | Grow Your Food Feed Your Soul,
Those Who Can Needle Work | 4 | Won't You Be My Neighbor |
| 3 | Clarence W. Sickles
Friendship Fund,
Happy Birthday Ruth! | 5 | The Meadows |
| | | 6 | Newcomers |
| | | 7 | Lobby Renovation, Facebook,
In Memoriam |

Grow Your Food, Feed Your Soul

The Heath Village Community Garden has been a blessing for our resident gardeners during these complicated times. The rest of us non-gardeners were very grateful to them for their fresh flowers, vegetables, and fruit which we were able to purchase at the Farmer's Market this summer. All monies collected at the Market are donated to the Friendship Fund.



The adorable new garden signs have also been a welcome addition. Special thanks to Housing Services Coordinator Patricia Cristo for making and donating them to the garden.



Those Who Can...Needle Work

"During this pandemic...there are many things we can't do, but we can knit..." And, oh, boy can they ever.

Our resident Needle Worker's group has made a sizable donation to the organization *Online Angels*, a not-for-profit that makes handmade items, and collects items to help those in need. In total, our residents knitted and donated 94 squares, 4 lap blankets, 14 headbands and 12 hats for babies/children. They have been supporting this organization for years.

Heath Village is very proud of this caring, talented, and generous group of residents.



Heath Village Voice
Heath Village
Hackettstown, NJ
908-852-4801

Editorial Staff:
Janice Cipriani
Melissa Nichols

The Clarence W. Sickles Friendship Fund



Unfortunately, the pandemic prevented us from gathering this fall for our annual Benefit Gala in support of the Friendship Fund.

Inspired by a single gift from a concerned resident, the Friendship Fund was established in 1971 through a joint effort between residents and the Board of Trustees to help residents facing financial hardship continue to live fulfilling lives here at the Village. It was championed by our founder and first Executive Director, The Reverend Clarence W. Sickles who was a passionate advocate for helping seniors in need.

Sadly, Reverend Sickles passed away at the height of the pandemic making an appropriate community-wide response difficult. He was instrumental in instilling the principles of fellowship and caring that have come to define our community; thus, the Board of Trustees is pleased to announce its decision to honor his legacy by renaming the Friendship Fund, ***The Clarence W. Sickles Friendship Fund.***

This Fund is a vital part of the Heath Village mission to provide our residents with security, dignity, fellowship, and personal and spiritual well-being. It speaks to the very heart of why Reverend Sickles founded our unique retirement community.

Your donation will not only honor Reverend Sickles by preserving and strengthening this Fund which was so very important to him, but will support our vulnerable residents when they need it most.

Please make checks payable to the C.W.S. Friendship Fund. 100% of your donation is tax-deductible. For additional information, please contact Melissa Nichols, Community Relations Coordinator at 908-684-5006 or at mnichols@heathvillage.com.

Happy 105th Birthday Ruth Forrest!

Ruth Forrest, our oldest resident, was born on September 13, 1915. She has lived at Heath Village for close to 30 years. We love you Ruthie!



Won't You Be My Neighbor

Activities at Heath Village may look and feel a little different since the pandemic but one thing that has remained constant is our gratitude for one another. No one is alone here at Heath Village. Finding ways to remain connected, yet safe and socially distanced, has been a priority for the Activities staff.

Spending time with our neighbors at the Block Parties held this summer was such fun. Enjoying a meal outdoors on the patio was a welcome respite for some of us from our own cooking. The pool enjoyed a steady stream of swimmers. The new tent adjacent to the courtyard offered a great place for residents to continue to enjoy some of their favorite activities such as Pinochle, Bridge, and Rummikub.

Our competitive Bocce players were thrilled to be able to resume their season. Even live entertainment has returned. Entertainers performed outdoors. It was like having lawn seats at a concert venue.

One thing we learned this summer is where there is a will, there is a way. Or, in other words, "Keep Calm, Mask Up & Carry On." We will get through this pandemic together.



The Meadows

Hopefully by the time you are reading this article, The Meadows, Heath Village's new Health Care Center and Rehabilitation Facility will have received its final certificate of occupancy (CO) from Washington Township paving the way for the New Jersey Department of Health to complete its inspections.

As soon as we have our CO from the Township, we will be scheduling a day during which we will host small group tours for residents. Both masks and reservations will be required to maintain proper social distancing.

Hopefully, these pictures will hold you over until then, but I cannot wait for you to see it in person. Until then, if you have any questions, please call Jill Mutek, Admissions Coordinator, at 908-684-5221.

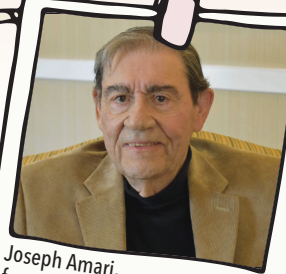
Mary Ellen Bove, LNHA
Chief Operating Officer



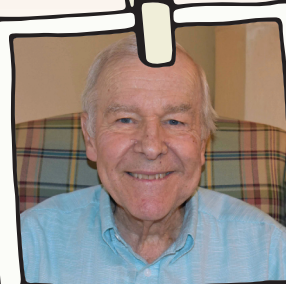
Newcomers



Gloria Amari,
from Whitehouse Station, NJ
to Apt. 244



Joseph Amari,
from Whitehouse Station, NJ
to Apt. 244



Don de Lambert,
from Brookfield, CT
to Apt. 228



Tom Edmunds,
from Succasunna, NJ
to Apt. 99



Lee Edmunds,
from Succasunna, NJ
to Apt. 99



Jeannette Ferrara,
from Hackettstown, NJ
to Apt. 222



Alan Kleinschrodt,
from Hackettstown, NJ
to Apt. 222



John Morrow,
from Bayville, NJ
to Apt. 242



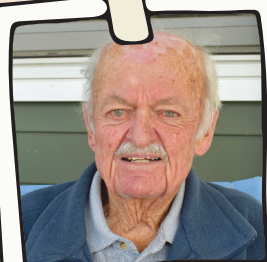
Marilyn Morrow,
from Bayville, NJ
to Apt. 242



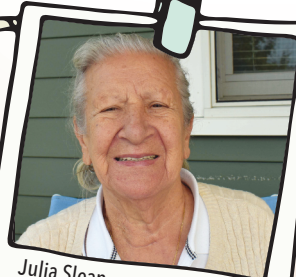
Judy Samuelson,
from Long Valley, NJ
to AC-22



Beatrice Lake,
from Long Valley
to Apt. 20



Felix Slean,
from Washington, NJ
to Apt. 115



Julia Slean,
from Washington, NJ
to Apt. 115



Brian Tape,
from Hackettstown, NJ
to Apt. 236



Angela Tape,
from Hackettstown, NJ
to Apt. 236

Lobby Renovation

While we are still waiting for the all-clear to allow residents and guests to see it for themselves, we are happy to report that the Heath House lobby renovation is just about completed. The new lobby features rich cherry wood accents, contemporary lighting, signature carpeting, unique artwork, and soft and elegant wallpaper/paint, that make for an inviting and warm place to relax with family and friends.

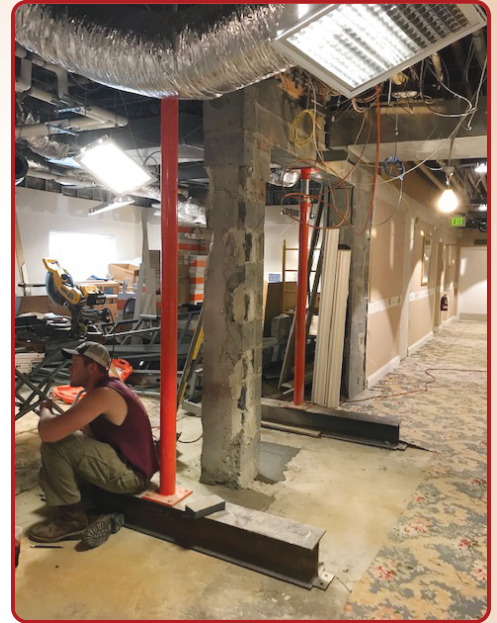
The furnishings are all new and make for a great place to catch up on the news or open mail. There are also four new tables, perfect for playing popular card and board games. The Club Room has been renovated as well and will now include computers, a printer, and a photocopier.

The reception area has been transformed to a lovely greeting area that showcases amazing Cambria stone, and the addition of a branding wall featuring our new Heath Village tree.

The Gift Shoppe also received a facelift with bright new shelving, carpeting, lighting, Cambria stone, and paint.

We look forward to welcoming our residents and visitors back to the building soon.

Diane Horner
Director of Maintenance



Did you know that Heath Village is on Facebook? Where else better to let the world know what a wonderful place Heath Village is to live and work? We hope that if you are on social media that you will "like" our page and encourage your friends and family to do the same. www.facebook.com/heathvillage.



In Memoriam

Elizabeth de Lambert
Fred Hemminger
Walter Sorg
Jane Abbate
Dorthea Schiller

6/15/2020 **Joan Miller**
7/12/2020 **Ann Farrell**
7/17/2020 **Jeanette DiGabriele**
8/13/2020 **Audrey Viazanko**
8/18/2020

8/23/2020
9/06/2020
9/07/2020
9/14/2020

Heath Village
430 Schooley's Mountain Road
Hackettstown, NJ 07840

NON-PROFIT ORG.
U.S. POSTAGE
PAID
UNION, NJ
PERMIT NO. 363

Heath Village has gone virtual!
Call 908-684-5009 today to schedule a "tour" of our beautiful campus,
see an apartment, and learn more about our many amenities.

The Friendship Fund Charitable Gift Annuity

Making an annuity gift: You irrevocably transfer money or securities to our Friendship Fund. In exchange, we pay you (and another, or a survivor, if you like) a fixed amount annually for life. In effect, your transfer is doing two things -making a charitable gift and purchasing a fixed income for life.

Income tax benefit: You get an income tax charitable deduction in the year you make your gift. If you let us know your date of birth and the amount of your contemplated gift, we can calculate your deduction.

How annual payments are taxed: A large portion of each annuity payment received is tax-free. The tax-free amount is fixed at the outset and remains constant for the period of your life expectancy.**

The rate of return is attractive and guaranteed for life - without investment worries or responsibility.

Rate Examples: One-Life Annuity Rates 1/1/2020

Age**	Rate
75	5.8 %
76	6.0 %
77	6.2 %
78	6.4 %
79	6.6 %
80	6.9 %
81	7.2 %
82	7.4 %
83	7.6 %
84	7.8 %
85	8.0 %
86	8.2 %
87	8.4 %
88	8.6 %
89	8.8 %
90+	9.0 %

The Friendship Fund Charitable Gift Annuity is a wonderful opportunity for giving, as it benefits the donor as well as residents of Heath Village. We hope that you will discuss this opportunity with your legal or financial counsel.

If you would like a private information session, feel free to make an appointment with Patrick E. Brady, Chief Executive Officer.

Enjoy campus life at HEATH VILLAGE A UNIQUE RETIREMENT COMMUNITY

Independent living in one of the garden-type units ranging in size from studio apartments to two-bedroom cottages. Dining and meal plans are optional.

Hotel-style living in **Heath House** where meals, housekeeping and linen services are included.

Mayflower House is a residential health care facility with 24 hour staff, meals, housekeeping, laundry, medication monitoring all included in the monthly cost.

Clarence W. Sickles Health Care Center offers sub-acute and long-term skilled nursing care in an environment that will pleasantly surprise you.

All monthly rates include 24-hour emergency call service and annual carpet cleaning; use of lounges, chapel, library, swimming pool, computer equipment, craft rooms, fitness center and other community facilities; bus service to Hackettstown, club cart service within the Community and on-site parking.

*Affordable monthly rates.
Optional community fees.
Come and see for yourself.
Call 908-852-4801 for an appointment.*